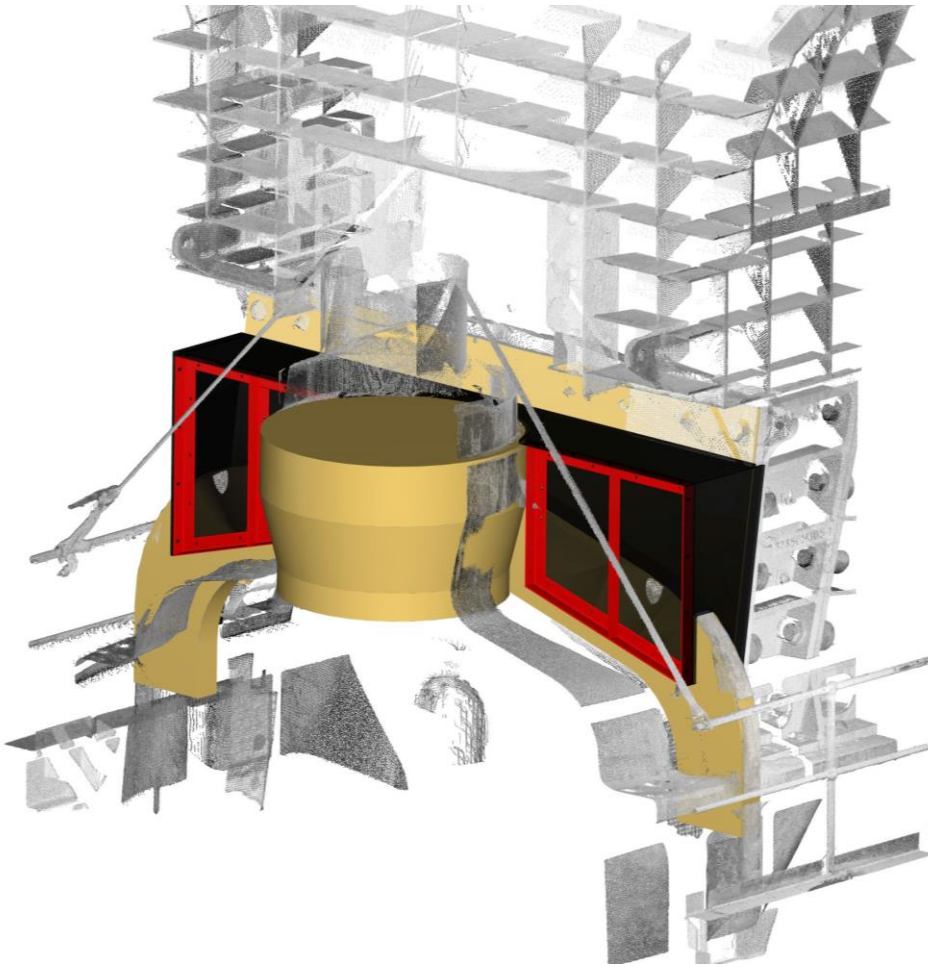




# Crusher Head Chute Dust Extraction Cover



Forefront Services was engaged to design and install a dust extraction cover between the crusher top shell and feed box. To ensure a sealed fit on the surfaces between the 2 components, the area was scanned then the scan data used to develop panels that the and securely seated on all surfaces.

Forefront Services deliverables included:

- 3D point cloud of the crusher top shell and feed box
- 3D model incorporated into the point cloud data to ensure a sealed fit across all surfaces
- Manufacturing drawings for the new components
- Fabrication of new components
- Surface treatment (blast and paint in accordance with site specifications)
- Site installation

Forefront completed the project on time and on budget without any modifications to any of the supporting structure or sealing panels.

**Commodity:**  
Gold

**Location:**  
New South Wales

**Service:**  
3D Terrestrial Scanning, Engineering Design, Fabrication and Surface Treatment, Site Installation.

