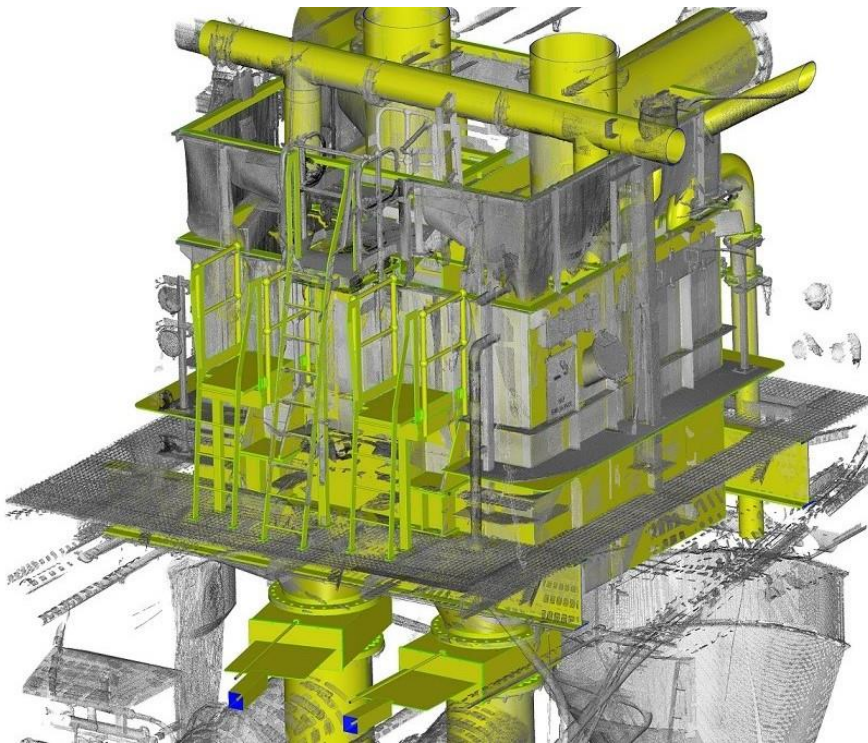




Flotation Cell Feed Box Valve Installation



Forefront Services was engaged to install 2 off 750NB knife gate valves to a flotation cell feed box to provide isolation to each float train. To provide space to install the valves the box needed to be raised by 400mm. In order to accurately identify the necessary modifications to the box and surrounding pipework etc, Forefront scanned the area then incorporated the model, (in its raised position), into the scan which allowed our design team to identify any structural clashes and other areas requiring modification. The project also included the installation of an additional 750NB valve into the tailings line and again a scan was taken of the current installation and the new valve and spool overlaid into the scan to ensure the valve did not clash with the surrounding steelwork.

Forefront Services deliverables included:

- 3D point cloud of the box and all connections
- 3D point cloud of the existing pipe installation and connections
- 3D model of the feed box and new valves for incorporation into the point cloud data to carry out clash detection
- Manufacturing drawings for all the modified and new components
- Modification drawings detailing the required site works
- Fabrication of new components
- Surface treatment (blast and paint in accordance with client specifications)
- Rubber lining
- Site installation

Forefront completed the project on time and on budget with no additional modifications or changes to the scope.

Commodity:
Gold

Location:
New South Wales

Service:
3D Terrestrial Scanning, Engineering Design, Clash Detection, Fabrication and Rubber Lining

